

Modern Education Society's
Wadia College of Engineering, Pune
(Wadia College Campus)
Department of First Year Engineering
Local Visit under FE Induction Program, 2024-2025
Activity Report

Activity Name: Local Visit under FE Induction Program

Venue:

Pimpri-Chinchwad Science Park, Kalewadi Road, IBMR College Rd, Science Park Marg, near Auto Cluster Exhibition Center, Chinchwad, Pimpri-Chinchwad, Pune - 411019, Maharashtra.

Objectives of Activity:

To prepare students for:

1. To bridge the gap between curriculum and Industry.
2. To communicate developments in Science & Technology and encourage creativity and spirit of inquiry among the students.
3. Under the induction programme for first-year students, to encourage them to look beyond the classrooms.

Target group: All FE Students

Number of Present Students: 358

Resource Person Details:

Name of Resource Person: Mr. Sunil Pote

Organisation/Institute: Pimpri-Chinchwad Science Park

Activity Schedule:

Class	Day	Date	Time
Comp 1, Comp 2, Comp 3, Comp 4, E&TC 1, E&TC 2, Mech 1, Mech 2, A&R	Tuesday	25/03/2025	9.00 am - 4.00 pm

Brief Description of Activity:

Pimpri-Chinchwad Science Park (PCSP) is a unique, non-formal science-learning center in the industrial twin-township of Pimpri-Chinchwad. It was inaugurated on February 8, 2013. Pimpri-Chinchwad Science Park was set up with a capital cost of Rs. 850 lakhs, shared equally by Pimpri-Chinchwad Municipal Corporation (PCMC) and the Government of India. The Corporation also provided approximately 7 acres of land for setting up the project, and the Science Park was developed under the joint auspices of the National Council of Science Museums (NCSM) and Pimpri-Chinchwad Municipal Corporation.

The Science Park was developed to initiate well-coordinated science communication and popularization activities in the region. The center includes a built-up area of approximately 4000 sq. m., housing three permanent galleries, a temporary exhibition hall, an inflatable-dome planetarium, a science demonstration area, an activity corner, an auditorium, a 3D science show facility, a library-cum-conference hall, and a workshop for maintenance and development of exhibits.

Students visited the different sections at the Science Park in the following sequence:

A) Automobiles Gallery:

The 600 sq. m. gallery comprises interactive exhibits such as kiosks, cut-section models, and dioramas explaining how automobile components like spark plugs, injectors, silencers, and wipers work.

B) Energy Gallery:

This exposition, spread over 400 sq. m., explains various forms of energy, their production, practical applications, environmental issues, world energy reserves, and future sources of energy through interactive exhibits, working models, and multimedia presentations.

C) Fun Science and Climate Change:

The Fun Science Gallery, spread over an area of 600 sq. m., provides opportunities to interact, explore, and experience various aspects of science in an engaging environment. The temporary exhibition on Climate Change explains natural volcanic eruptions, Earth's tilt, continental drift, and human-made causes like the greenhouse effect and deforestation, highlighting their consequences on land, air, ice, ocean, and life on Earth.

D) 3D Science Show:

A 15-minute Polaroid-based stereo projection show that creates a three-dimensional effect. The show provides an immersive experience with special Polaroid spectacles and explains concepts of ecology, ecosystems, and global warming.

E) Taramandal Show:

An inflatable dome planetarium presents basic astronomy concepts in an interactive way in a 20-minute show. It also explains fascinating facts about the Sun using high-definition video and 4K images.

F) Science Park:

Spanning over 3.5 acres, the Science Park provides an engaging and non-coercive environment for learning science. It consists of several interactive exhibits explaining fundamental scientific principles.

Activity Coordinator:

Prof. M. D. Raut

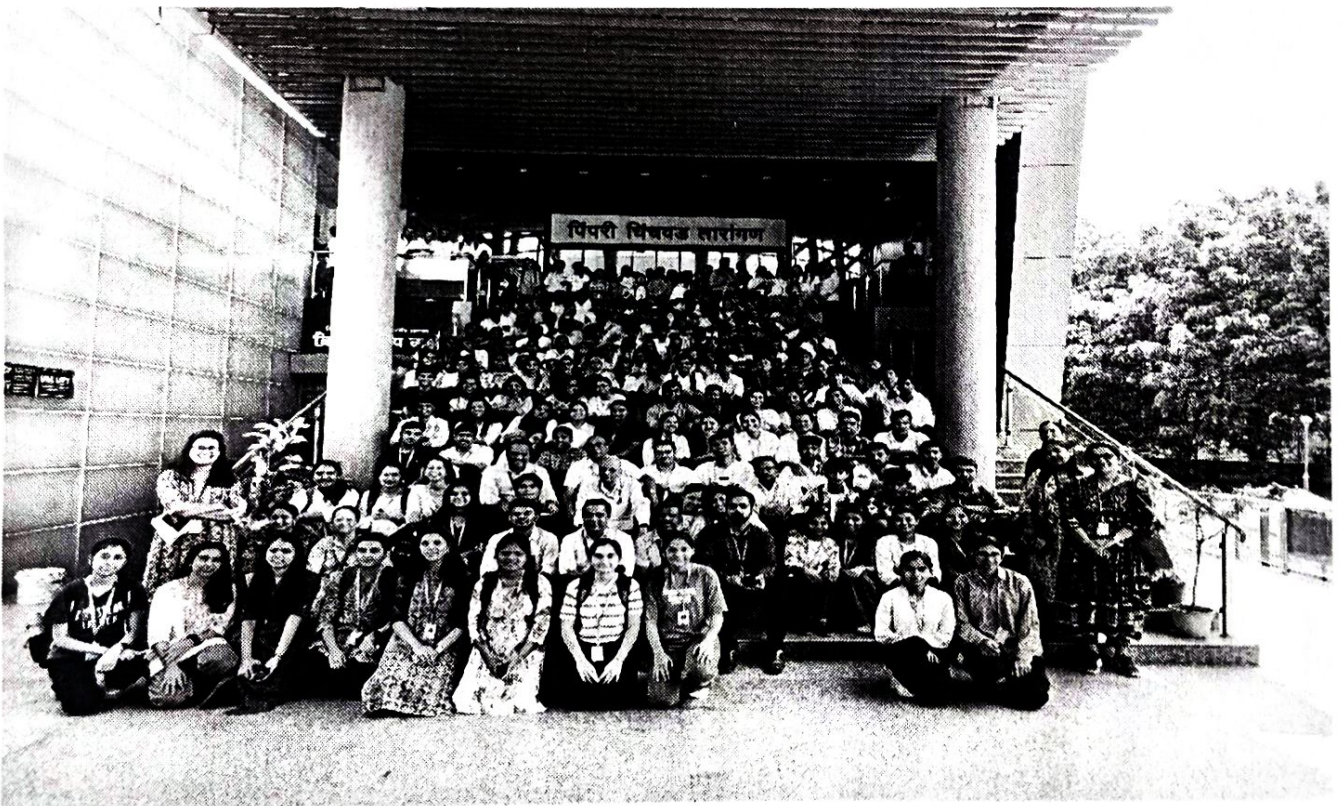
Prof. P. P. Katkar

Faculty Associated:

1. Dr. D. S. Adkar
2. Dr. S. B. Sharma
3. Dr. A. R. Prayag
4. Prof. R. B. Chormale
5. Prof. S. S. Kulkarni

6. Dr. A. A. Sonawane
7. Prof. S. A. Borkar
8. Prof. A. V. Deshpande
9. Prof. M. P. Metkar
10. Prof. S. S. Walunj
11. Dr. R. S. Mehere
12. Prof. S. S. Sopal
13. Prof. M. K. Patil
14. Prof. P. V. Aundhkar
15. Mr. V. Patil
16. Mr. S. M. Kate

Photographs:





Prof. M. D. Raut

Prof. P. P. Katkar

Activity Coordinators

P/O

Dr. D. S. Adkar

FE HoD

Dr. M. P. Dale

Principal



PIMPRI CHINCHWAD SCIENCE PARK

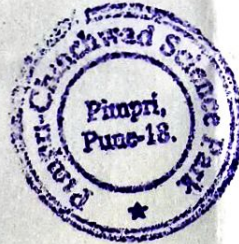
(A Non-profit Company set up by PCMC under Section 08 of Companies Act 2013)
CHINCHWAD PUNE- 411019

Attendance Certificate

Date: 25/03/2025

To Whomsoever It May Concern

This is certify that Wadia College of Engineering's Students and teachers have visited Science Park on 25th March 2025. Total 372 students and teachers visited and explored the facilities of Pimpri Chinchwad Science Park and Tarangan.



Shraddha
25/03/2025
Chief Executive Officer
Pimpri Chinchwad Science Park